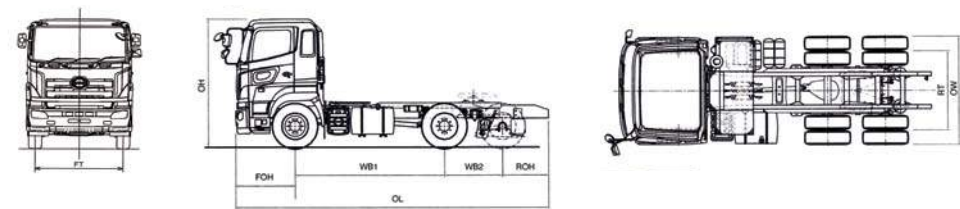


SPECIFICATIONS SHEET

ITEM				SH1EERA (UBS)			
Engine	Model			HINO E13C-TM (EURO 3)			
	Type			Diesel, 6-Cylinder, Vertical-In-Line, Overhead Cam, Water Cooled			
	Displacement			L 12.913			
	Max. Output (JIS Gross)			kW(PS)/rpm 309 (420) / 1,800			
	Max. Torque (JIS Gross)			Nm(kgfm)/rpm 1,903 (194) / 1,100			
	Bore and Stroke			mm 137 x 146			
	Fuel Injection System			Electronic Control Common Rail Type			
	Air Intake System			Turbo Charged Intercooled			
Clutch	Max. Engine Speed			rpm 2,150			
	Type			Dry Single Plate with Damper Springs			
	Control			Hydraulic with Air Booster			
Transmission	Diameter			mm 430			
	Model			MZ12			
	Type			Twelve (12) Forward and Two (2) Reverse Speeds, Overdrive, Synchronesh 1st – 12th			
Axle	Control			Mechanical with Power Assistance			
	Front	Type	Reversed Elliot, "I" Section Beam				
		Capacity	kg	7,500			
	Rear 1	Type	Full-Floating, Single Reduction, Single Speed by Hypoid Gearing				
		Capacity	kg	13,000			
	Rear 2	Type	Lift Axle				
Capacity		kg	12,000				
Brake	Service Brake Type			"S" Cam Type, Leading and Trailing Shoes for Front and Rear with Anti-Lock Brake System (ABS) except 3rd Axle			
	Service Brake Control			Full Air, Dual Circuits			
	Parking Brake Type			Spring Brake, Acting on All Wheels for Emergency and Parking Brake Purpose			
Suspension	Front	Type	Semi Elliptic Tapered Leaf Springs with Shock Absorber and Stabilizer				
	Rear 1	Type	Parabolic Leaf Spring with Double Acting Shock Absorber				
	Rear 2	Type	Liftable Air Bellow Suspension with Shock Absorber				
Steering	Type			Telescopic and Tilt Steering Column with Locking Device, Recirculating Ball with Hydraulic Booster, Integral Type			
Wheels and Tires	Wheel Type			Ten (10) – Stud Wheels (ISO Type)			
	Rim Size			22.5 x 8.25			
	Tire Size			295/80R22.5 – 16PR			
	No. of Tires			Eleven (11) [Including One (1) Spare Tire]			
Electrical	Type			24V, Negative Earth			
	Battery			12V x 2, Series Connection			
	Capacity			243kC (65 A – h) at 20-hour rate			
	Alternator Capacity			24V, 60Amp			
Fuel Tank Capacity	L			390			
PERFORMANCE							
GCW Rating	kg			66,000			
Performance	Max. Speed			km/h 119			
	Gradeability			(tan Ø) % 35.3			
Transmission Gear Ratio	1st			10.127 / 8.054			
	2nd			6.414 / 5.101			
	3rd			4.038 / 3.211			
	4th			2.507 / 1.994			
	5th			1.588 / 1.263			
	6th			1.000 / 0.795			
	Reverse			9.902 / 7.875			
Rear Axle Carrier	Model			SH19			
	Ratio			4.333			
DIMENSION AND MASS							
Chassis Mass (without standard tool set and spare tyre)	Total			kg 8,040			
	Front			kg 4,655			
	Rear			kg 3,385			
Dimensions	Wheelbase	WB	mm	3,480 + 1,350			
	Overall Length	OL	mm	7,285			
	Overall Width	OW	mm	2,490			
	Overall Height	OH	mm	3,015			
	Front Overhang	FOH	mm	1,380			
	Rear Overhang	ROH	mm	1,075			
	Front Tire Tread	FT	mm	2,050			
	Rear Tire Tread	RT	mm	1,820			
	Turning Radius (on tire)			mm 6,200			
Seating Capacity			2				
HINO MOTORS SALES (MALAYSIA) SDN. BHD. is engaged in an ongoing research and development program, and reserves the right to change specification without prior notice in order to pass on to the customer any resulting advances or technical refinements. All specifications of the product are within normal manufacturing allowances and tolerances.							



HINO Authorized Dealer:

Ver. 02/03.2015

PERFECT FIT FOR YOU

700Series



SH1EERA 6x2

Designed GCW 66,000kg
(6 x 2 (UBS) Prime Mover)



Environmental
Friendly



More Power



Low Fuel
Consumption



HINO MOTORS SALES (MALAYSIA) SDN BHD (187863-U)

Head Office, Selangor: Lot PT. 24, Jalan 223, Section 51A, 46100 Petaling Jaya, Selangor Darul Ehsan, Malaysia. Tel: (603) 7957 5199 (12 lines) Fax: (603) 7954 3276

Branch, Sarawak: Lot 1076, Block 218, 4th Mile, Penrissen Road, 93250 Kuching, Sarawak, Malaysia. Tel: (082) 451 611 (5 lines) Fax: (082) 451 993

Regional Office, Sabah: Miles 4 1/2 Jalan Tuaran, Lot No.353, Taman Cempaka, Likas, 88450 Kota Kinabalu, Sabah, Malaysia. Tel: (088) 393 663 Fax: (088) 424 223

www.hino.com.my

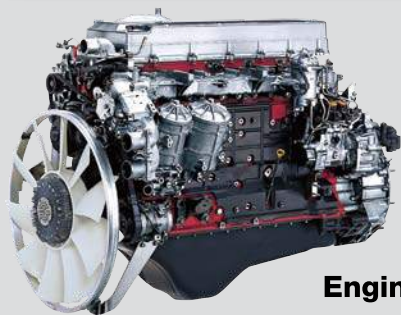


Applicable to West Malaysia
Toll Free: 1800-88-3666

*Terms and Conditions Apply

AIM FOR CUSTOMER TRUST AND CONFIDENCE

POWERFUL ENGINE



Engine

EURO 3

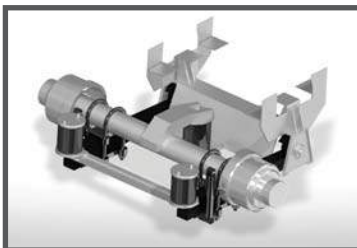
E13C-TM

Displacement :
12,913cc, 6-cylinder in-line,
Turbo-Charged Intercooler,
Common Rail

E/G Output :
309kW (420PS) / 1,800rpm

E/G Torque :
1,903Nm (194kgfm) / 1,100rpm

LIFTABLE 3RD AXLE



Improved operation flexibility with lower tire wear and tear, while maintaining high loading capacity with the liftable axle.

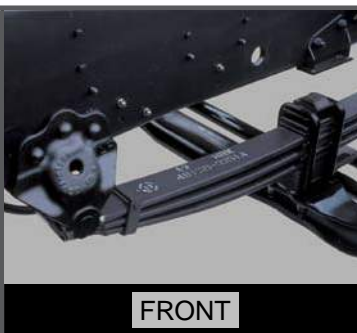
FUEL ECONOMY



Aerodynamic

The cab has resulted from pursuit of the world top level aerodynamic performance. The exterior design combines an attractive, imposing and dominant character of a large vehicle with aerodynamic performance and safety at a higher order and contributes to the excellent fuel economy.

HIGH COMFORTABILITY



FRONT

Long Tapered Leaf Spring

Suspension

Tapered Leaf Springs combined with air suspension provides excellent shock absorption from the road surface condition and help reduces cargo bed vibration.



Cab Accessibility

The first step is now connected directly to the chassis, bringing it closer to ground level. Cabin access is also easier and safer due to new, optimized 3-step pitch. The larger door openings and footsteps allow easy access to enter and exit.



Optimized Cab Space

Better visibility and operability, spacious and quality interior provide drivers the comfort they need.

High-functionality Seats

The three-dimensional, body-cradling form and seat suspension from ISRI, a top European name, provides superior seating comfort. The air lumbar support (with two-position backrest) supports the driver's back comfortably.

SAFETY



Energy-Absorbing Steering Column

In the event of a head-on collision, the bendable, energy-absorbing steering wheel and collapsible tilt/telescope steering column help to absorb some of the impact, providing better protection for the driver.

Door Impact Beams

High-rigidity door impact beams at the side help to increase driver and passenger safety from a side collision.



Equipped with Power Window and Central Locking

Liftable 3rd Axle

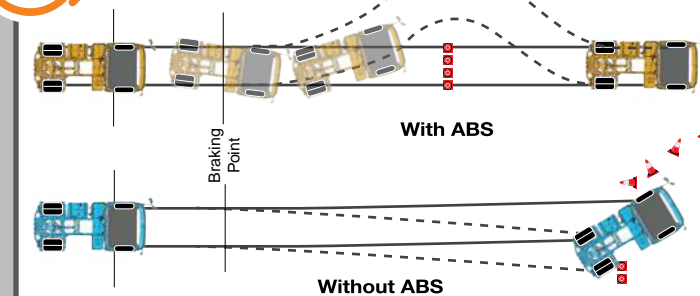


Equipped with Electric Side Mirror



Front Under-run Prevention (FUP)

FUP is provided at the lower front end to prevent the under-running of a passenger car in the event of a head-on collision.



ABS Antilock Braking System

ABS helps the driver maintain control of the vehicle when braking on a slippery surface by selectively controlling the braking force of individual wheel in order to prevent the wheels from locking.

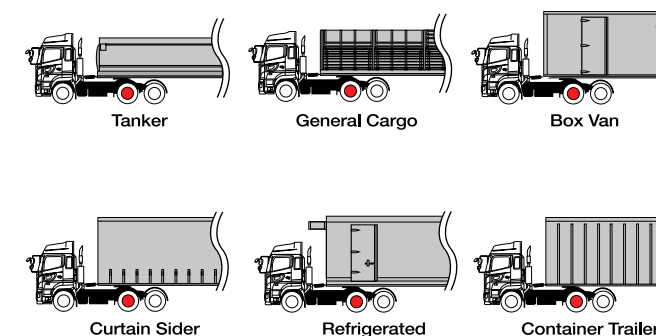
APPLICATION

Body Type

A truck for every application of bodies to suit your type of business

Legend

● Drive Axle



Note : Some images may be used for illustration purposes only.